



„Info“

# Article-Specification

## 12745011

### Contents

- 1 – components and logistics
- 2 – raw material information
- 3 – drawing of assembly
- 4 – drawing of cap DIN 40
- 5 – drawing of bottle neck plastic
- 6 – drawing of bottle neck glass

### cap DIN 40

12745011

material: BAS3001

colour: LIF53467 blue 2%

### Logistics

weight per cap DIN40

8,9 g

800 pieces per box K1 (Box 582x380x280/ 1 bag) app.

7,1 kg

12.800 pieces incl. palette and 16 boxes app.

149,6 kg

### This specification is not subject of revision service

This information is valid for 6 month from date of this dispatch, new information available on request. This information may not be copied partially or complete nor handed out to competitors for use or copying without our approval. ©



„Info“

## **BAS3001**

Polypropylene Copolymer (COPO)

<b>Performance Properties (1):</b>	<b>Method</b>	<b>Unit</b>	<b>Value*</b>
Mass Density (23°C)	ISO 1183	g/cm <sup>3</sup>	0,9
Melt Flow Rate (230°C/2,16 kg)	ISO 1133	g/10 min	4,0

### **Food and pharmaceutical regulations**

**regulation 1935 / 2004 / EC**  
Directive 2002/72/EC

**US Food and Drug Administration (FDA)**  
meets the FDA requirements

**Heavy metals (ELV Directive 2000/53/EC and its following amendments)**  
Directive 2005/673/EC - Directive 2000/53/EC

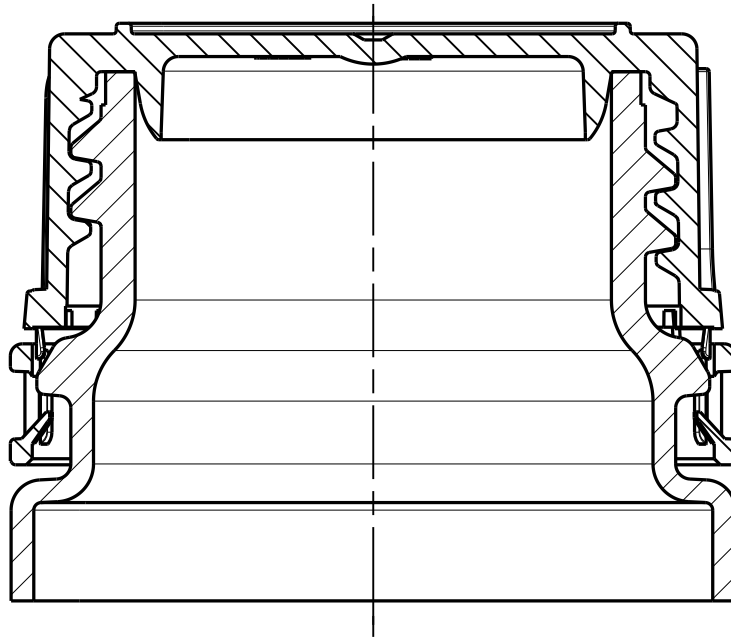
**European Union (EU) Directive – Packaging and Packaging Waste – 94/62/EC (as amended)**

**Toys**  
This product complies with the requirements in CEN Standard EN71.3

**Phthalates**  
Directive 67/548/EC

**Further information is available on request.**

This information is valid for 6 month from date of this dispatch, new information available on request. This information may not be copied partially or complete nor handed out to competitors for use or copying without our approval. ©

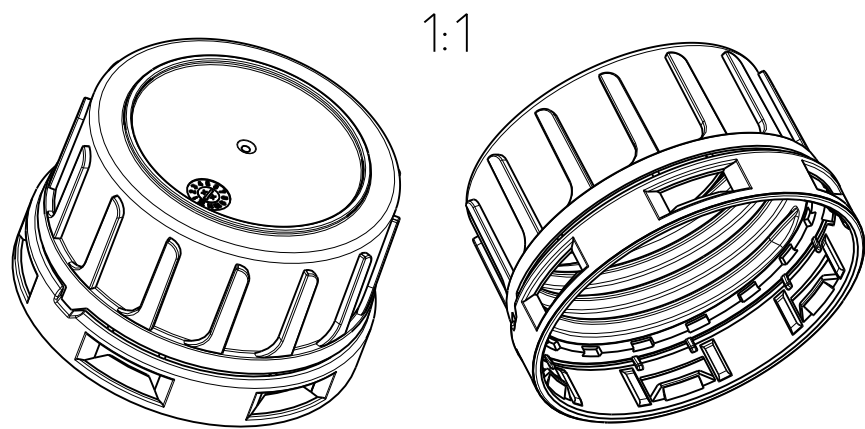
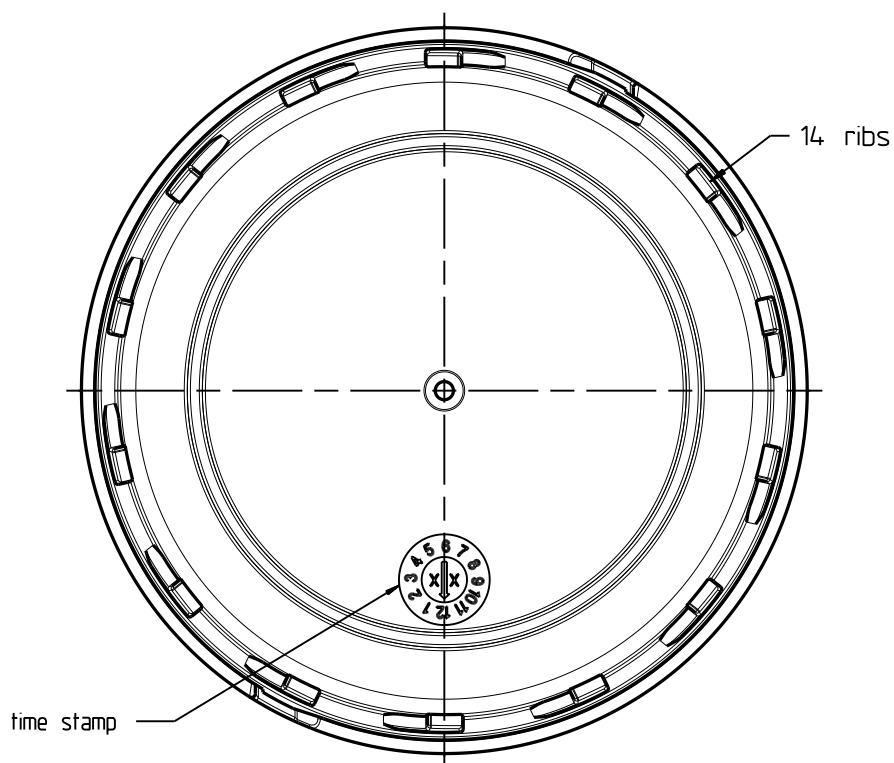
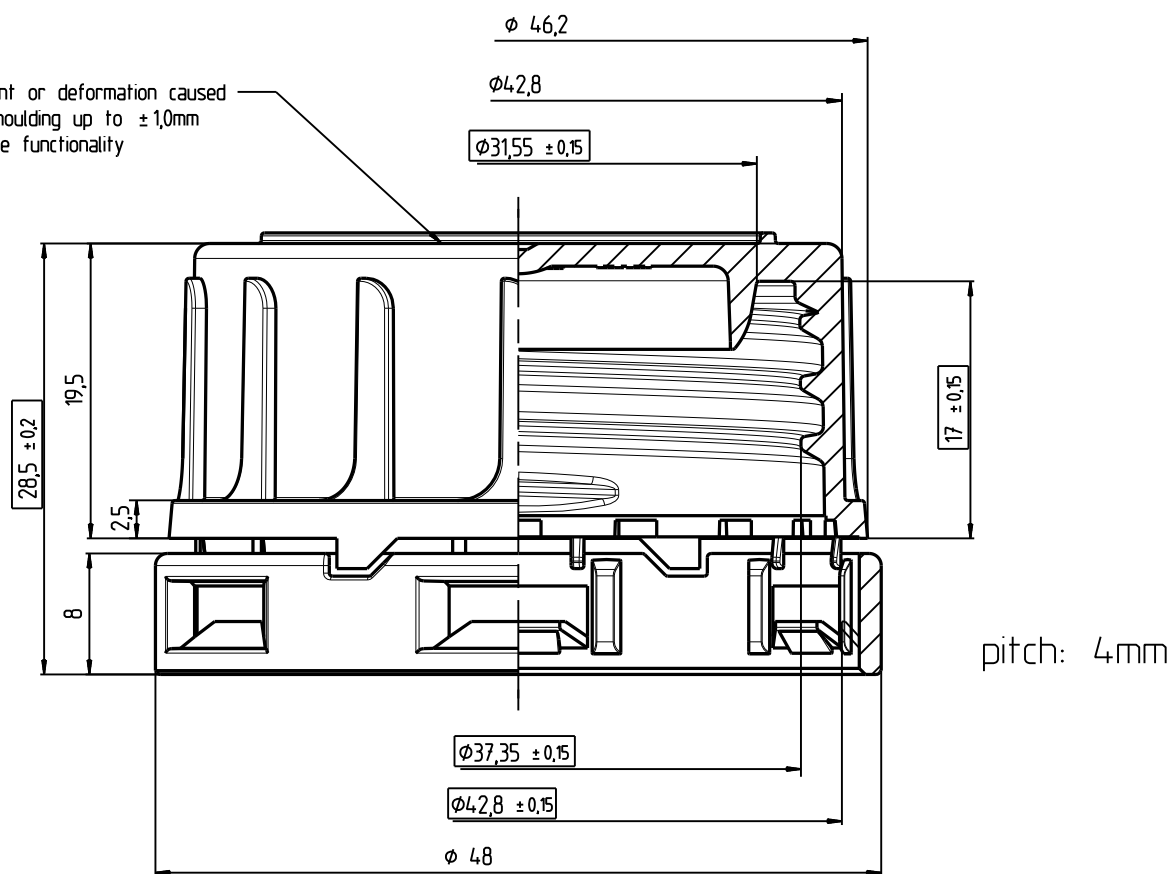


recommended torque to screw on  $250^{+30}_{-30}$  Ncm

This information is valid for 6 month from date of this dispatch, new information available on request

				Datum: date	11.12.2009	Freimasstoleranzen: general tolerances	DIN 16901-150	Material: material	-
				Gezeichnet: drawn by	Mertens	Massstab: scale	2:1	Gewicht: weight	-
				Geprueft: checked	Roemer	Bezeichnung: description			
				 GEORG MENSHEN GmbH + CO.KG. Kunststoffverarbeitung 57413 Finnentrop Tel: +49 (0)2721-518-0 Fax: +49 (0)2721-518-198 Web: http://www.menshen.com		- Assembly - tamper evidence screw cap DIN 40 with bottle neck "version with sealing-cone"			
						Artikel Nr.:	1.2745.99.1 assembly	Blatt:	1
						Entwicklung Nr.:		von:	1
				Date:	KDZ 1.2745.99.1				
				Ersatz fuer:	-	Ersetzt durch: superseded by			
∂	Text added (torque to screw on)	19.07.2010	Mertens	This drawing may not be copied partially or complete nor handed out to third persons or competitors for use or copying without our approval ©					
Index	Aenderung modification	Datum date	Name name						

head plate misalignment or deformation caused by shrinkage and demoulding up to ±1,0mm does not influence the functionality



= tested dimensions

This information is valid for 6 month from date of this dispatch, new information available on request

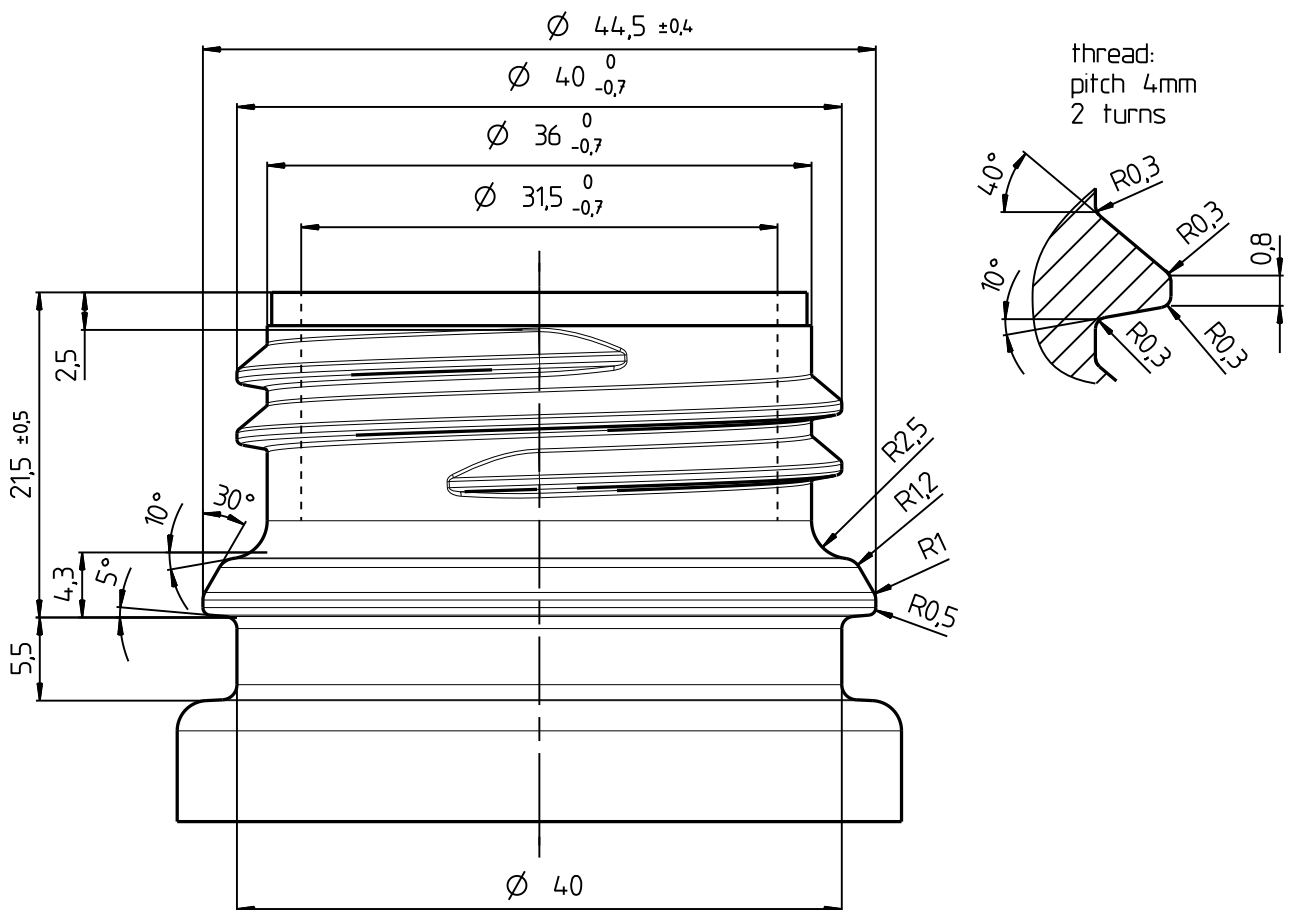
Datum: date	11.12.2009	Freimasstoleranzen: general tolerances	DIN 16901-150	Material:	PP
Gezeichnet: drawn by	Mertens	Massstab: scale	2:1	Gewicht: weight	-
Geprueft: checked	Roemer	Bezeichnung: description	tamper evidence screw cap DIN 40 "version with sealing cone"		
 GEORG MENSHEN GmbH + CO.KG. Kunststoffverarbeitung 57413 Finnentrop Tel: +49 (0)2721-518-0 Fax: +49 (0)2721-518-198 Web: http://www.menshen.com		Artikel Nr.:	1.2745.99.1	Blatt:	1
		Entwicklung Nr.:		von:	1
a	Ø 37,35 ± 0,15/17 ± 0,15 Text "head plate..." added	Datum	19.07.10	Name	Mertens
Index	Aenderung modification	Datum	date	Name	name
This drawing may not be copied partially or complete nor handed out to third persons or competitors for use or copying without our approval ©		Datei: file	KDZ 1.2745.99.1		
		Ersatz fuer: supersedes	-		
		Ersetzt durch: superseded by	-		

- notes:
- outer rib surfaces to be finished according to VDI 3400, stage 27
  - miscellaneous visible outer surfaces high gloss
  - inner surfaces gloss, optimized for demoulding

Please read before using this document

The neck dimensions shown are those which have generally been found to be functional based on our and industry experience. Because of variability in closure and container finishes materials, however, each closure/finish system should be individually evaluated to ensure it meets applicable performance criteria. Closures and finishes having dimension outside these ranges are also appropriate for use if applicable performance criteria are met.

Therefore the bottle neck drawing is only a recommendation. The framed dimensions and tolerances have to be kept. The bottle neck drawing does not release the bottle maker and the processor from the responsibility of optimising the coordination between the closure according to the valid article drawing and the bottle neck. So that the cap and the neck threads fit well together it is necessary that the two threads ( cap - bottle ) connect together for one complete turn. We recommend to check it.



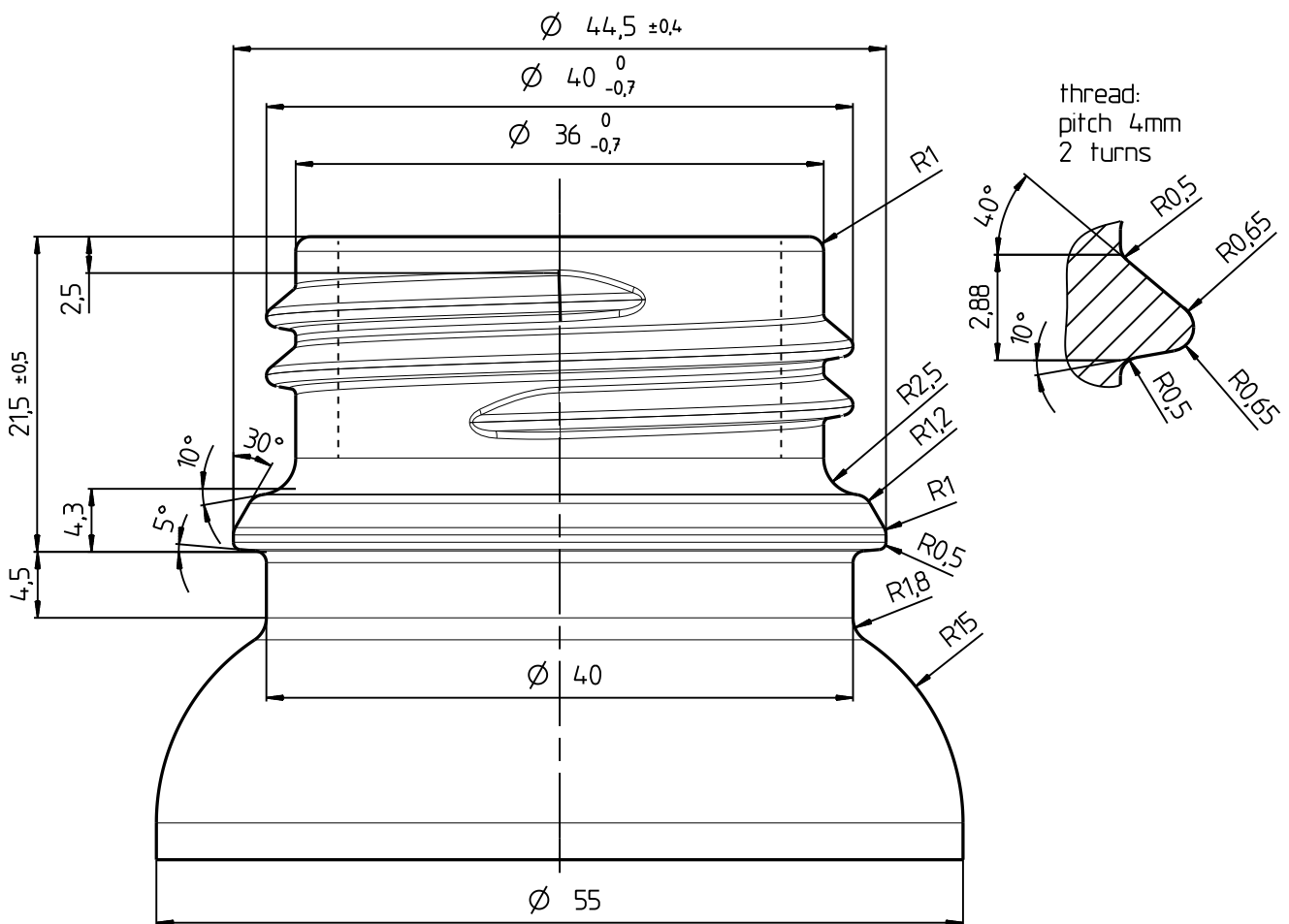
This information is valid for 6 month from date of this dispatch, new information available on request

			Datum: date	11.12.2009	Freimasstoleranzen: general tolerances	DIN 16901-150	Material: material	HDPE	
			Gezeichnet: drawn by	Mertens	Massstab: scale	2:1	Gewicht: weight	-	
			Gepreuft: checked	Roemer	Bezeichnung: description	bottle neck DIN 40 (plastic)			
			 GEORG MENSHEN GmbH + CO.KG. Kunststoffverarbeitung 57413 Finnentrop Tel: +49 (0)2721-518-0 Fax: +49 (0)2721-518-198 Web: http://www.menshen.com			Artikel Nr.:	1.2745.99.1 / 2.2745.99.2	Blatt: sheet	1
									Entwicklung Nr.:
			This drawing may not be copied partially or complete nor handed out to third persons or competitors for use or copying without our approval ©			Datei: file	1_2745_99_1_fl_plastic		
Index	Aenderung modification	Datum date				Name name	Ersatz fuer: supersedes		

Please read before using this document

The neck dimensions shown are those which have generally been found to be functional based on our and industry experience. Because of variability in closure and container finishes materials, however, each closure/finish system should be individually evaluated to ensure it meets applicable performance criteria. Closures and finishes having dimension outside these ranges are also appropriate for use if applicable performance criteria are met.

Therefore the bottle neck drawing is only a recommendation. The framed dimensions and tolerances have to be kept. The bottle neck drawing does not release the bottle maker and the processor from the responsibility of optimising the coordination between the closure according to the valid article drawing and the bottle neck. So that the cap and the neck threads fit well together it is necessary that the two threads ( cap - bottle ) connect together for one complete turn. We recommend to check it.



This information is valid for 6 month from date of this dispatch, new information available on request

			Datum: date	11.12.2009	Freimasstoleranzen: general tolerances	DIN 16901-150	Material: material	glass		
			Gezeichnet: drawn by	Mertens	Massstab: scale	2:1	Gewicht: weight	-		
			Gepuert: checked	Roemer	Bezeichnung: description	bottle neck DIN 40 (glass)				
			 <b>GEORG MENSHEN GmbH + CO.KG.</b> Kunststoffverarbeitung 57413 Finnentrop Tel: +49 (0)2721-518-0 Fax: +49 (0)2721-518-198 Web: <a href="http://www.menshen.com">http://www.menshen.com</a>	Artikel Nr.:	1.2745.99.1 / 2.2745.99.2	Blatt:	1			
				Entwicklung Nr.:		von:	1			
				Datei:	1_2745_99_1_fl_Glas					
Index	Aenderung modification	Datum date	Name name	This drawing may not be copied partially or complete nor handed out to third persons or competitors for use or copying without our approval ©			Ersatz fuer:	-	Ersetzt durch: superseded by	-